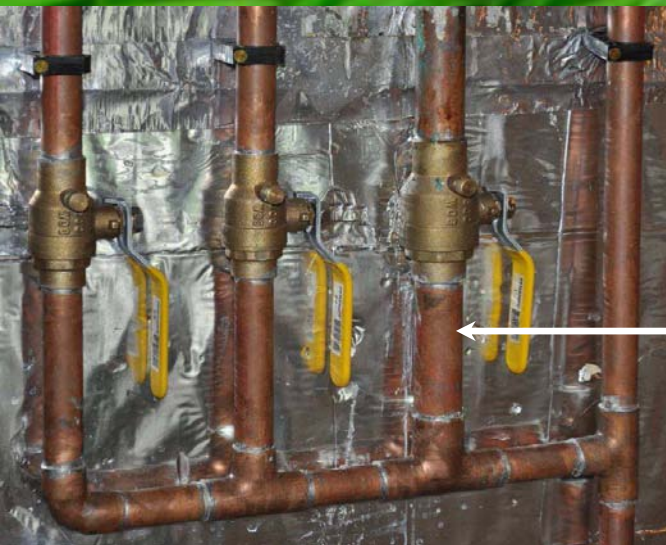


Step by step instructions for shutting water off to your backflow prevention device before a blowout of your irrigation system

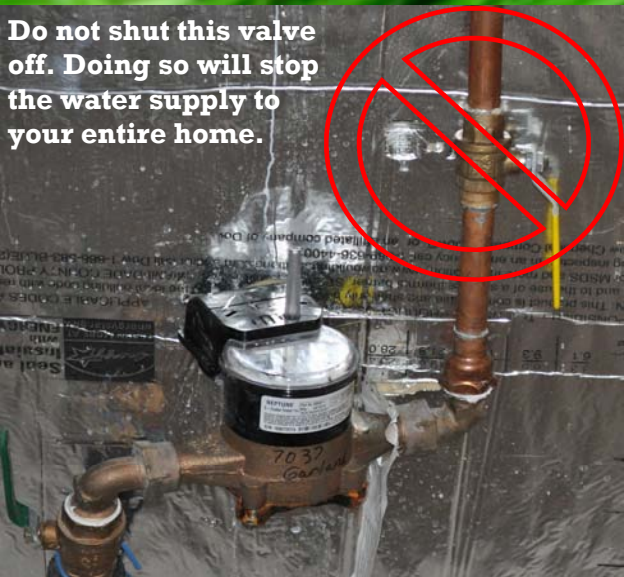


Step #1—Locate the manifold system for your water supply to your home. (usually inside the utility room)

Step #2—Locate the shut off valve to the backflow prevention device outside of your home. (usually the largest diameter of all of them)



Step #3—Turn the shut off valve 90 degrees to the pipe as shown above. This will turn off the water to the backflow prevention device .



Do not shut this valve off. Doing so will stop the water supply to your entire home.

If you are confident that you have successfully shut off the water to the irrigation system, you will not need to proceed with the following steps.

Step #4— Locate the test port on the backflow prevention device as shown.



Step #5— Open the test port with a flat head screw driver. If no water comes out of the port, you have successfully turned off the water to the backflow prevention device. Close the test port and proceed to step #6. (some residual water may leak from this port, but it will stop)

If water comes out of the test port and does not show signs of stopping, review the steps above. Proceed with the steps until step #5 is a success



Step #6— Turn the controller for the irrigation system to the off position. You are now ready for Architectural Concepts Irrigation to winterize your system while you are away from your home.

Note... Not all backflow prevention devices look the same. They all have the same mechanical features, just in different set ups.